



Forest Carbon Monitoring

Forest Owners and Managers

- to develop information for forest carbon management, accounting and monitoring

Regional and National Administrators

- to enable spatially explicit biomass and carbon monitoring

Carbon Traders

- to facilitate accurate data and efficient tools for carbon trading

International Organisations

- to gather consistent forest carbon data to support policy definition and research

For the Society at large

- to help mitigate climate change with sustainable forest management

1

Close integration of in-situ and EO data

2

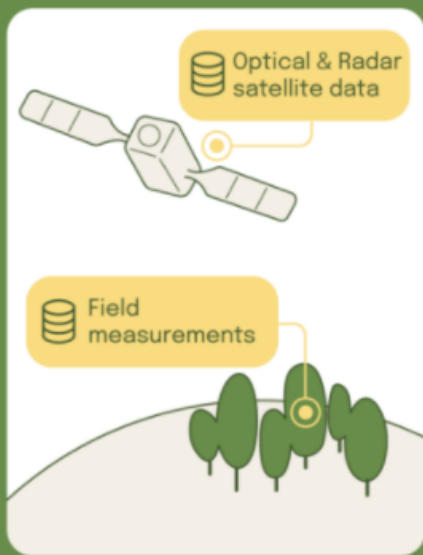
Process-based forest ecosystem carbon modelling integrated

3

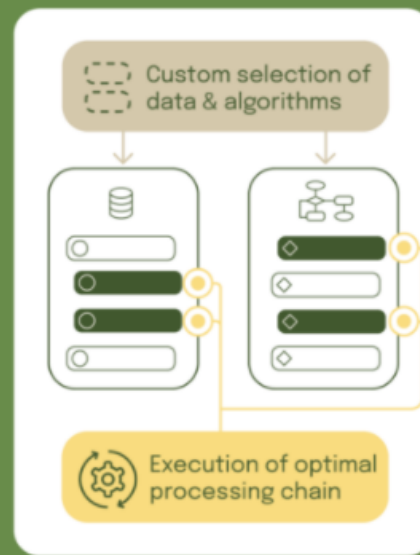
Flexibility to user needs from local mapping to continental monitoring



Forest Carbon Platform



DATASETS



PROCESSING



OUTPUT

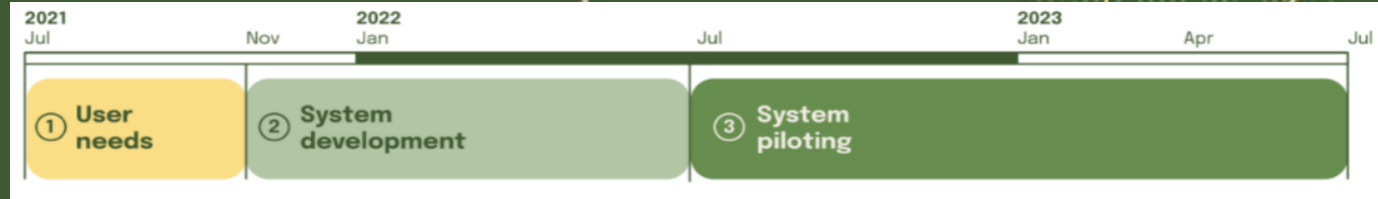
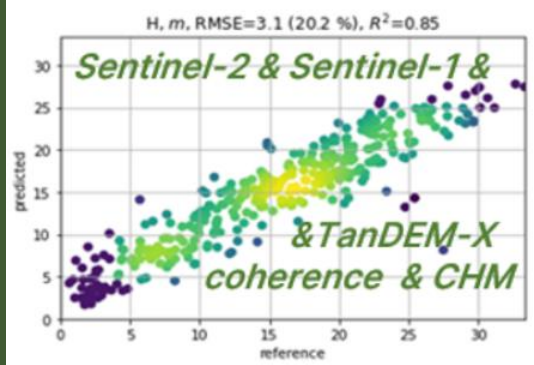
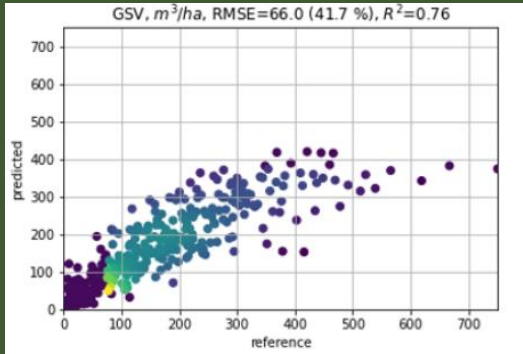


www.forestcarbonplatform.org





Forest Carbon Monitoring



Forest structure variable products

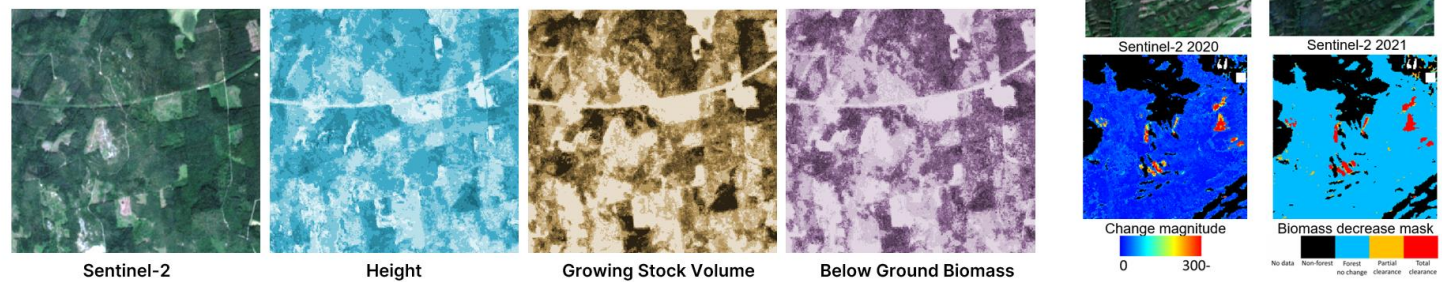
- Stem density
- Height
- Diameter
- Basal area
- Growing stock volume
- Species proportions
- Site type

Biomass and growth products

- Above ground biomass
- Below ground biomass
- Stem volume increment

Change products

- Change magnitude
- Change type
- Biomass decrease mask



www.forestcarbonplatform.org

