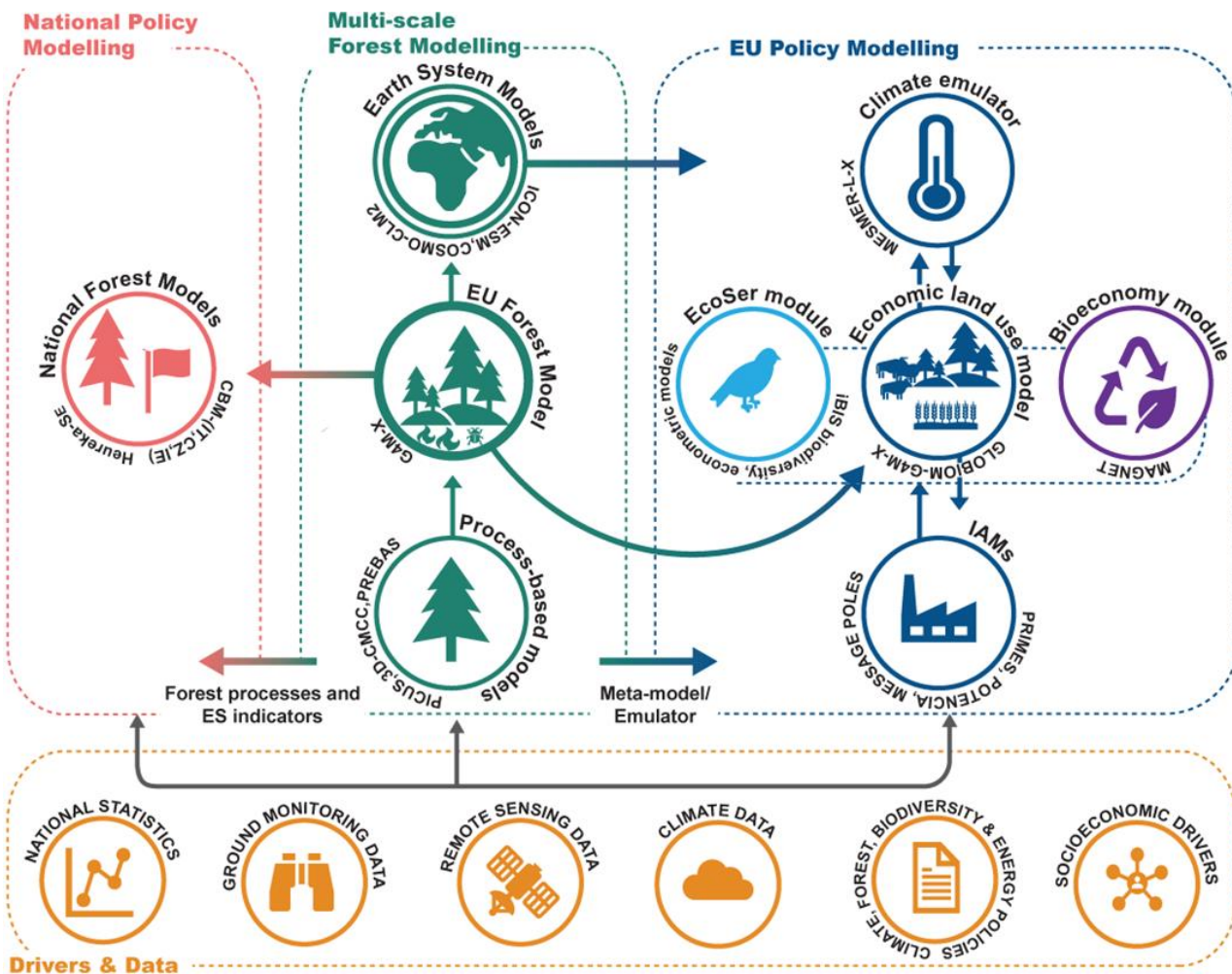


# ForestNavigator

*Navigating European forests and forest bioeconomy sustainably to EU climate neutrality*



## Raw data

Satellite forest data products

- Forest land (use) transitions (Copernicus, GFW and HILDA+)
- Biomass/carbon stocks (ESA BiomassCCI 2010-2020)
- Current and past disturbances (Landsat and Sentinel time series)

Forest ground monitoring data

- Forest inventories and plot network data (NFIs, ICP)

National forest statistics

- harvest statistics (NSO), UNFCCC reporting

Market structure and trade data

- statistics on wood products production and international trade (FAOSTAT)

Ecological data from biodiversity and ecosystem services

- biodiversity observation networks (EUROPABON, KCEO)
- mapping of protection (Natura 2000, WDPA)

## Processed datasets at service of modelling and reporting

- Multilayered forest geodatabase at service of monitoring and modelling carbon and biodiversity
- Dataset and report on reconciled EU forest carbon stocks status/change
- Report and collection of high frequency updated forest cover and disturbance layers
- Demonstration of yearly updates in EU-wide and country GHG inventories

Horizon Europe



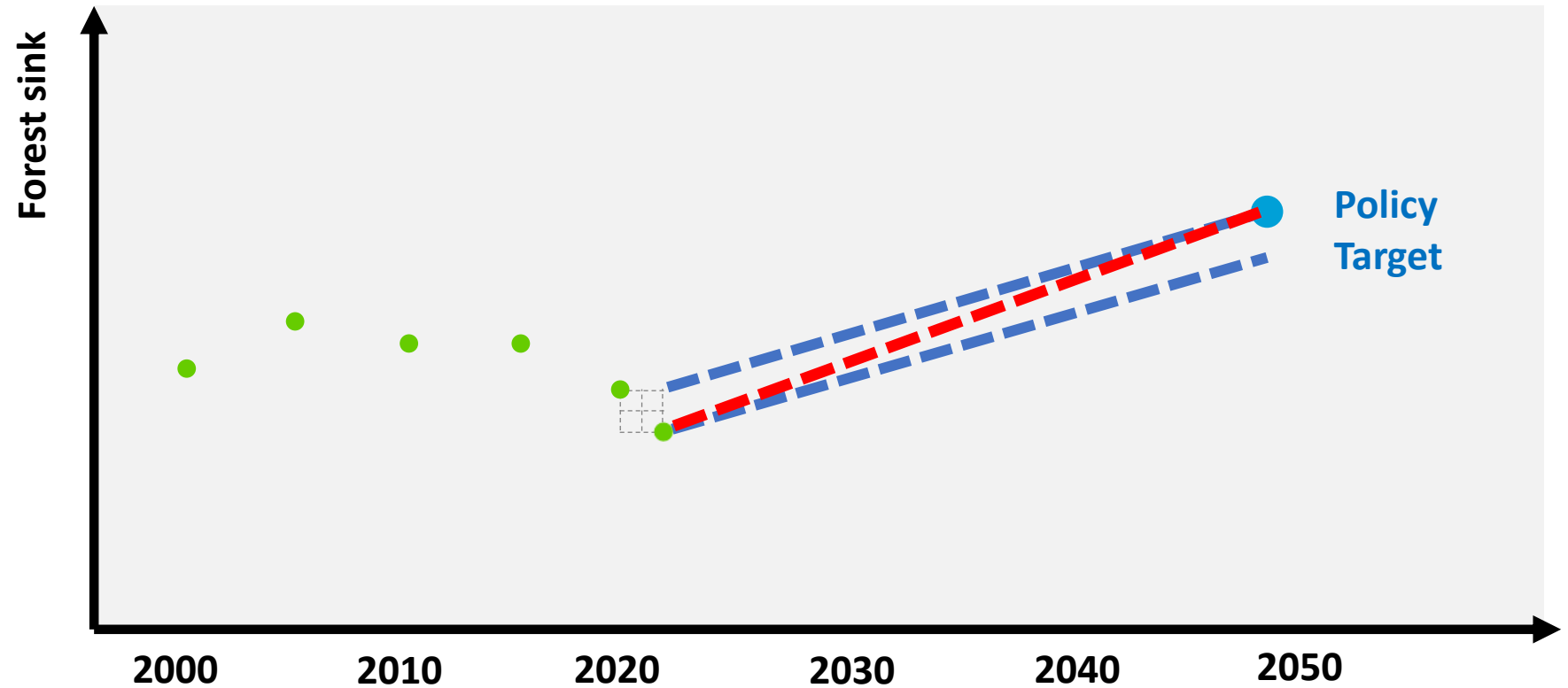
Funded by the European Union



# Near real time update of policy pathways and proofing towards reporting



- A standardized **near real-time model-data assimilation**
- Capacity for yearly updating of the model projections and **adjust mitigation strategies in the face of novel socioeconomic developments and disturbances** (COVID, socio-economic disruptions, natural calamities)
- Informing about deviations from planned pathways to **assess timely corrections for re-aligning to the National and EU policy objectives**



*Challenge: Monitoring of forest disturbances in near real-time from dense Sentinel 1 and 2 remote sensing time series needs triangulation with national harvest statistics (National Statistical Offices, FAOSTAT, FRA, EUROSTAT, MCPFE), databases of natural disturbances, including fire (EFFIS), wind (FORWIND), data on wood trade flows and HANPP.*