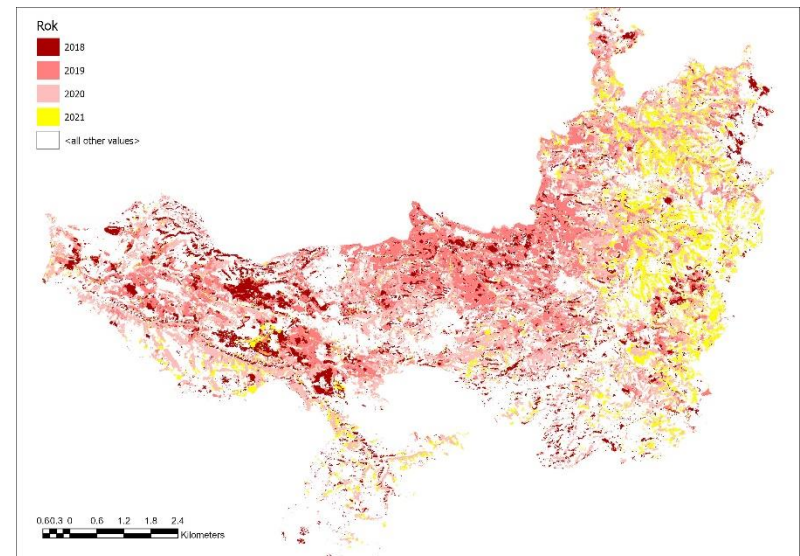




Severe drought in last years, followed by bark beetle outbreak caused unprecedented tree mortality, which needs to be monitored.

The project focuses on monitoring methods by remote sensing to estimate area and stock of dead trees.

See more: deadtrees.fld.czu.cz





Agroforestry at the forefront of farming sustainability in multifunctional landscapes in Europe

Horizon Europe project with 14 institutions across Europe

The project mission is to support innovation, exchange knowledge, and provide new solutions that will enable farmers in the EU and associated countries to meet various goals such as food production, **carbon sequestration**, and biodiversity. Faculty of forestry and wood sciences Prague is the **coordinator** responsible for monitoring.

